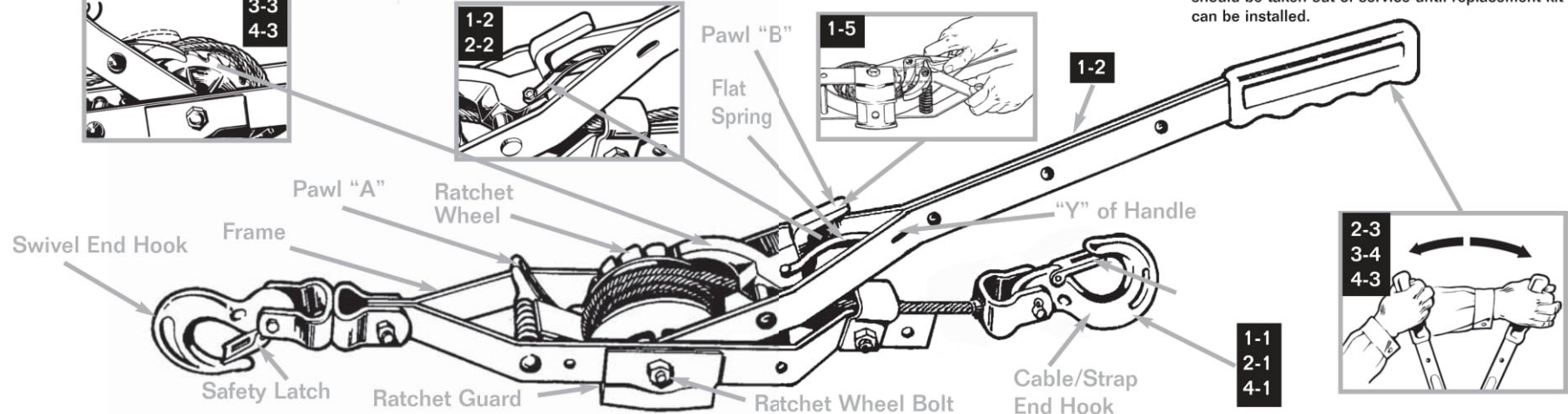


MAASDAM POW'R-PULL

WARNING! Units that show wear at/or exceeding of 1/8-inch, and/or broken ratchet wheel teeth, should be taken out of service until replacement kit can be installed.



HOW TO OPERATE A POW'R-PULL/STRAP PULL'R

Step 1: Unreeling Cable or Strap

UNREEL ONLY WHEN PULLER IS NOT SUPPORTING A LOAD! DO NOT ALLOW LOADED UNIT TO UNREEL FREELY!

- 1-1 Attach cable/strap end hook to fixed object strong enough to support load being moved or lifted. **ENSURE SAFETY LATCH IS SECURELY CLOSED.**
- 1-2 Place thumb on flat "spring" in "Y" of handle assembly, aligning it with two-directional arrow on the label.
- 1-3 Push until "spring" bows in direction of "Down (Cable Out)". **PAWL "B" IN HANDLE ASSEMBLY BECOMES DISENGAGED FROM RATCHET WHEEL.**
- 1-4 Hold handle and hook assembly such that gold ratchet guard is on top and then pull upwards on handle until it no longer moves.
- 1-5 Place thumb on gold colored lever of Pawl "B" in handle and press down until both pawls disengage (can visually see disengagement).
- 1-6 While holding Pawl "B" in down position, walk backwards until cable or strap reaches desired length. **MAINTAIN AT LEAST 2 WRAPS OF CABLE/STRAP ON RATCHET WHEEL DRUM WHEN UNIT IS UNDER LOAD.**

Step 2: Lifting or Pulling a Load

- 2-1 After completing Step #1 and reaching desired length, attach swivel end hook to load. **ENSURE SAFETY LATCHES ARE SECURELY CLOSED.**
- 2-2 Place index finger on flat "spring" in "Y" of handle assembly, aligning it with two-directional arrow on handle and push until "spring" bows in direction of "Up (Cable In)".
- 2-3 Stand on the hook assembly side of the Puller, tightly grab hand grip and move handle back and forth to take up slack. (For Strap Pull'R #WS-25 only) Pull strap through ratchet guard, walking towards fixed object as strap is pulled, to take up slack.
- 2-4 As load begins to move, visually inspect support object and hooks. **KEEP FINGERS, CLOTHING, HAIR, ETC. AWAY FROM ALL MOVING PARTS! KEEP HAND ON GRIP!**
- 2-4a If support object shows ANY sign of being unable to support load, **STOP** immediately and release tension on load per Step #3. Detach Puller, move to alternate support object and begin again with Step #1.
- 2-5 Continue to pull load to desired position/location. If handle no longer moves, limit of Puller has now been reached. **NEVER use a "cheater bar" or handle extender!** You risk exceeding the load limit and CAUSING YOURSELF SERIOUS BODILY INJURY.

Step 3: Lowering or Releasing a Load

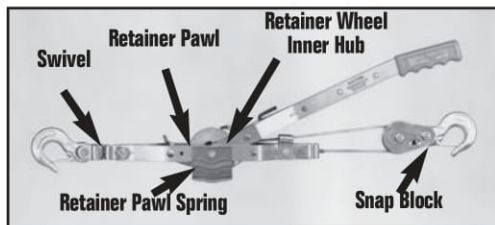
- 3-1 Before releasing tension, **BE SURE** that positioned load is supported and secure.
- 3-2 Place thumb on flat "spring" in "Y" of handle assembly, aligning it with two-directional arrow on handle. Push until "spring" bows in direction of "Down (Cable Out)". **PAWL "B" IN HANDLE ASSEMBLY BECOMES DISENGAGED FROM RATCHET WHEEL.**
- 3-3 Tightly grab hand grip and pull handle in direction of swivel hook assembly until handle no longer moves. **RETAINER PAWL "A" IN FRAME ASSEMBLY RELEASES FROM RATCHET WHEEL. PAWL "B" WILL ENGAGE PAWL "A" AND PUSH IT OFF THE RATCHET WHEEL (1 NOTCH AT A TIME).**
- 3-4 Push handle away from swivel hook assembly area until "click" is heard, then pull handle back towards swivel hook assembly. Repeat until load is in place. **AT ALL TIMES KEEP ONE HAND ON HAND GRIP WHILE KEEPING SECOND HAND TOTALLY AWAY FROM PULLER UNIT!**
- 3-5 Once load is in final position, **STOP** moving handle, disconnect both hooks and remove Puller.
- 3-6 Wind excess cable or strap back onto ratchet wheel per Step #4.
- 3-7 Conduct **SAFETY INSPECTION** of Puller unit, checking cable or strap, ratchet wheel, hooks and other moving parts for signs of damage. **LUBRICATE MOVING PARTS AS NECESSARY.**

Step 4: Rewinding Cable or Strap

REWIND ONLY WHEN PULLER IS NOT SUPPORTING A LOAD! AS CABLE OR STRAP IS REWOUND, INSPECT FOR POSSIBLE DAMAGE.

- 4-1 Attach cable/strap end hook to fixed object. **ENSURE SAFETY LATCH IS SECURELY CLOSED.**
- 4-2 Place index finger on flat "spring" in "Y" of handle assembly, aligning it with two-directional arrow on handle.
- 4-3 Push until "spring" bows in direction of "Up (Cable In)". **PAWL "B" IN HANDLE ASSEMBLY BECOMES ENGAGED WITH RATCHET WHEEL.**
- 4-4 While holding other hook in one hand and hand grip in the other hand, repeatedly ratchet handle back and forth until cable or strap is fully wound onto ratchet wheel. **WALK TOWARDS FIXED OBJECT AS CABLE OR STRAP IS WOUND.**
- 4-4a (For Strap Pull'R #WS-25 only) **WIND STRAP ONLY TO THE LIMITS OF THE RATCHET WHEEL. ONLY 10 FT. OF STRAPPING CAN BE RATCHED AROUND THE RATCHET WHEEL OR THE UNIT WILL JAM. TO UNJAM WEBBING, REMOVE RATCHET WHEEL BOLT WHILE THERE IS NO LOAD BEING APPLIED.** Coil and bind the remaining strapping for safe keeping.
- 4-5 Remove hook from fixed object.

LUBRICATION



Regular lubrication is **VERY IMPORTANT**. The unit will not function properly and may become dangerous if not lubricated. Apply lightweight motor oil (i.e. SAE20) or spray lubricant (i.e. WD-40®) to points highlighted below. Frequency of lubrication depends on frequency of use and operating environment. Regularly check unit and apply lubrication when needed.

INSPECTION

Besides following the Safety, Lubrication and How to Operate... instructions found on pages 2 - 9, Maasdam also recommends the periodic inspection of your tool. The American Society of Mechanical Engineers has developed such an inspection schedule. Make this practice part of your regular maintenance!

Visual Inspection *

The operator should visually inspect the tool before each use, looking at...

- 1) all moving mechanisms for interference with proper operation
- 2) hooks and latches for deformations, chemical damage, cracks and wear
- 3) hook latch for proper operation/attachment
- 4) wire rope for fraying, kinking, corrosion, etc.
- 5) levers for bends, cracks or other damage
- 6) damage to the support for the hoist
- 7) make sure all moving parts are properly lubricated

*Maasdam suggests visual inspection before every use.

Written Inspections

A third party inspection, with recorded results for continuing evaluation, should be conducted regularly on each tool. The frequency depends on use - Daily to Weekly; every 3 months; Weekly to Monthly; every 6 months; and Monthly; once a year.

- 1) Loose bolts, nuts or rivets
- 2) Evidence of worn, corroded, cracked or distorted parts
- 3) Evidence of damage to hook retaining nuts or collars
- 4) Evidence of worn pawls, cams or ratchets
- 5) Evidence of warning label
- 6) End connections of wire rope

ADDITIONAL THINGS TO CONSIDER WHEN USING OUR QUALITY MAASDAM PRODUCTS

- Lubricate all moving parts regularly!
- Wear safety glasses whenever operating a Puller!
- When operating, keep others clear from the immediate area!
- When pulling or lifting, load should be in straight line, hook to hook!
- Keep hands, hair and clothing away from all moving parts!
- Do not allow ratchet wheel to spin freely!
- Make sure that safety latches on hooks are securely closed!
- Never remove warning labels affixed to the unit!
- Misuse of this product can lead to serious bodily injury!
- Do not allow nose of pawl to rest on tip of ratchet wheel teeth!
- Pullers are not intended for use as tie-down!
- Maintain at least 2 wraps of cable or strap (excluding Part No. WS-25 Strap Pull'R) on ratchet wheel drum when unit is under load.

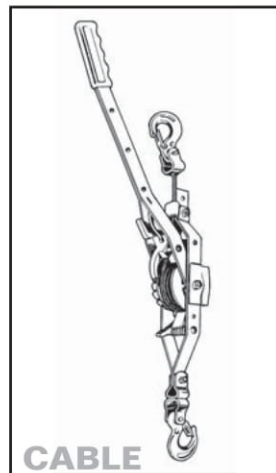
PARTS & ACCESSORIES

When Safety and Dependability Matter Most. These are the watchwords that guide Maasdam Pow'R-Pull's every action. We build our products using the finest materials available. We test and retest our units so that you receive the finest quality Pow'R-Pull, Long Haul Rope Puller or Strap Pull'R available.

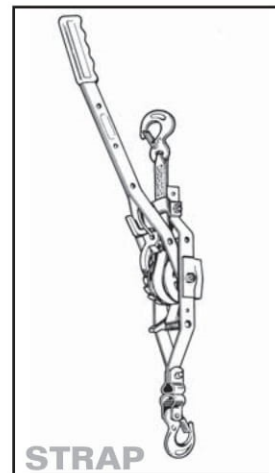
The very same component parts used to produce your tool can also be purchased. Identify your needs and choose from one of the many Tool Life Extend'R Kits available. If a Swivel Hook Assembly needs replacement, it is best to replace the nut at the same time. Safety and Dependability go hand-in-hand with a well maintained unit!

To order a kit, contact a customer service representative at 888.797.7855

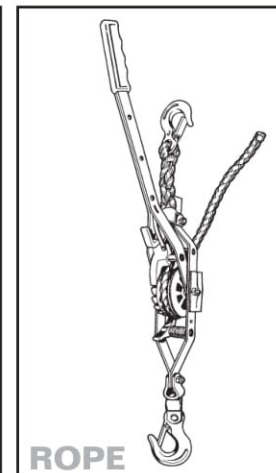
THREE TYPES OF PULLERS



CABLE



STRAP

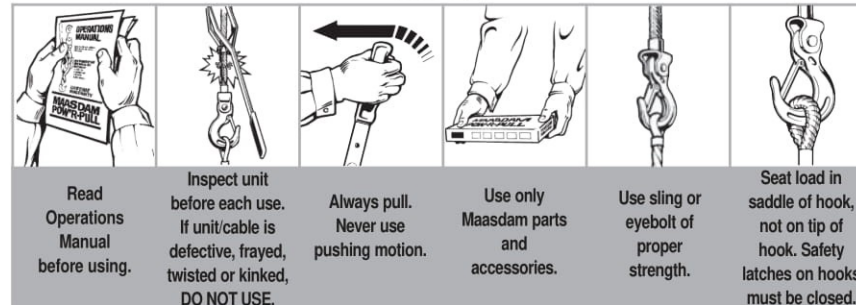


ROPE

WARNING

Read - and follow - all instructions. Successful use of your Puller will happen when you understand how to use the unit and apply good sense while doing so. Be SAFE! Get to know the "Proper Usage" of your tool by examining the following illustrations. Failure to read this manual may lead to serious bodily injury!

DO's



DON'Ts

