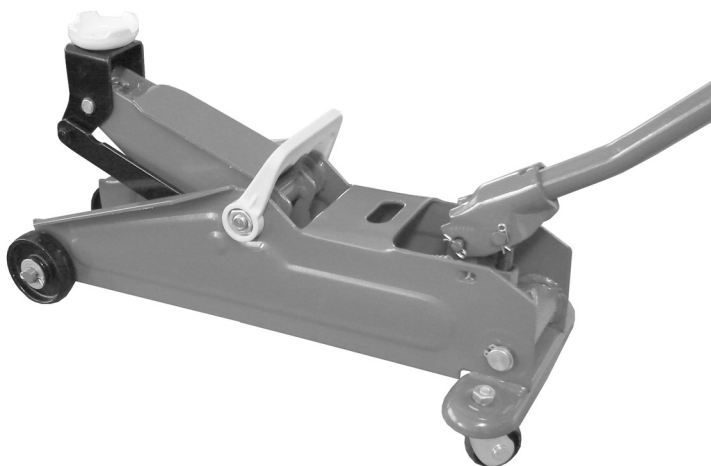


CLAMPBRO®

STRONG-ARM



HYDRAULIC TROLLY JACK

MODEL NO: CTJ2B, CTJ2MB

PART NO: 7623035, 7623040

OPERATION & MAINTENANCE INSTRUCTIONS



INTRODUCTION

Thank you for purchasing this CLARKE Hydraulic Trolley Jack

Before attempting to use this product, please read this manual thoroughly and follow the instructions carefully. In doing so you will ensure the safety of yourself and that of others around you, and you can look forward to your purchase giving you long and satisfactory service.

GUARANTEE

This product is guaranteed against faulty manufacture for a period of 12 months from the date of purchase. Please keep your receipt which will be required as proof of purchase.

This guarantee is invalid if the product is found to have been abused or tampered with in any way, or not used for the purpose for which it was intended.

Faulty goods should be returned to their place of purchase, no product can be returned to us without prior permission.

This guarantee does not effect your statutory rights.

SPECIFICATIONS

	CTJ2B	CTJ2MB
Part number	7623035	7623040
Length (not including handle):	452 mm	452 mm
Width	188 mm	188 mm
Height of lifting cup (at rest):	130 mm	130 mm
Maximum lifting height from floor:	338 mm	338 mm
Distance raised per stroke:	6.5 mm	6.5 mm
Weight	8.5 kg	8.5 kg
Number of full strokes to maximum height:	32	32
Rated capacity	2 Tonnes	2 Tonnes

SAFETY PRECAUTIONS

1. This jack is for lifting only, do not move a load using the jack as a dolly
2. Always inspect the jack before use. Make sure that all parts are in good condition and operating smoothly, and that no cracks or distortion is apparent. If in doubt do not use. Have the parts replaced or consult your CLARKE dealer.
3. Make sure that the jack is on a firm solid base, and there is no possibility of it slipping when under load.
4. Make sure the load is taken by the full saddle and that the point of lift on the load, is of sufficient strength to support the full load adequately.
5. Always use supports to stabilise the load once lifted. NEVER work on or under a load unless it is fully and adequately supported. NEVER rely upon the jack to hold the load in position.
6. Never push a load off the jack.
7. Ensure that all personnel are well clear of a load being raised, or lowered.
8. NEVER exceed the rated load for the jack (See "Specifications" on page 2.).
9. Do not use if an oil leak is apparent. Consult your Clarke dealer.

SPARE PARTS

The following user serviceable parts are available from your Clarke dealer, or Clarke International Parts Department.

1. Saddle
2. Castor Assembly
3. Front Wheel Assembly
4. Operating Lever
5. Carrying Handle

OPERATION

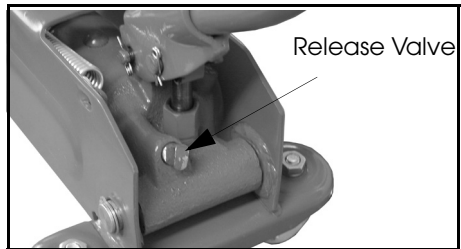
NOTE: Where included, the carrying handle should be attached by clipping it over the two large nuts at the main arm pivot. see photograph on the front cover.

Ensure the load is chocked and stable and on firm level ground

1. Position the jack so that the saddle is directly beneath the lifting point and that there are no obstacles to prevent a clean lift, also, make sure that all personnel are well away from the area, before raising the vehicle.
 - Consult the vehicle handbook to determine the correct lifting points.

USING THE TROLLEY JACK

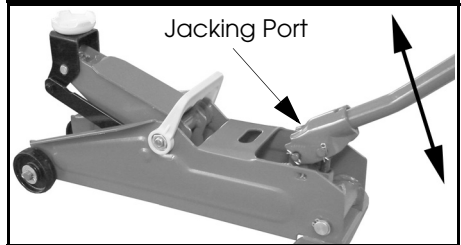
1. Place the operating lever over the release valve and turn it fully clockwise to close the valve.



2. Place the operating lever in the jacking port and pump the operating lever so that the saddle rises to the lifting point.

- Raise the vehicle to the required level.

3. Place axle stands directly beneath suitable support points,



4. Place the operating lever over the release valve and VERY carefully turn the handle anti-clockwise to lower the load on to the axle stands.

- Ensure the axle stands are centred about the support point and perfectly stable before full weight is taken.

NOTE: Ensure this operation is carried out under complete control. DO NOT allow the load to drop suddenly as this could damage internal components.

5. Remove the jack from the vehicle.

NOTE: The jack will move slightly during operation. It is important therefore that the immediate vicinity is clean and completely free from debris.

MAINTENANCE

BEFORE USE.

Inspect for distortion of components, and security of all nuts and bolts. If in doubt, do not use. Have damaged parts repaired or replaced. If necessary, consult your CLARKE dealer.

EVERY 6 MONTHS

1. Oil all joints, linkages and front wheel hubs.
2. Apply grease to the caster bearings.

NOTE: Lubrication and cleanliness is important as dirt, rust etc can cause a jerky action which could damage internal components.

ANNUALLY

Carry out a thorough inspection for serviceability of components & check for oil leaks. Only a very slight oil seepage is permissible. If a leak is evident, do not use jack and consult your CLARKE dealer.

STORAGE

Store in a dry place, with the ram fully retracted, where it cannot be attacked by the elements. If stored for long periods, inspect at least once a year, clean and re-oil. For servicing, contact your CLARKE dealer, or CLARKE International Service Department.

**For Spare Parts and Servicing, please contact your nearest dealer, or
CLARKE International, on one of the following numbers.**

PARTS & SERVICE TEL: 020 8988 7400

PARTS & SERVICE FAX: 020 8558 3622

TROUBLESHOOTING

	CAUSE	SOLUTION
Jack Will Not Raise The Load	Low Oil Level	<ol style="list-style-type: none"> 1. Make sure the ram is fully retracted by turning the handle fully anti-clockwise. 2. Turn the release valve fully anti-clockwise and remove it. <ul style="list-style-type: none"> • The oil level should be level with the bottom of the threads inside the oil chamber. 3. If necessary, top up to the required level 4. Only use clarke hydraulic oil (part no. 3050830 for a 1 litre bottle. 5. Replace the release valve, closing it fully, then pump handle until the arm reaches its full height. 6. Open release valve and step on saddle forcing it to lower as quickly as possible. repeat this procedure three or four times. 7. Finally, raise jack under load to test its operation.
	Air In The System	<ol style="list-style-type: none"> 1. Open release valve and pump handle fully, 6 or 7 times to purge air. 2. Close release valve and try again.
	Release Valve Seat Dirty	<ol style="list-style-type: none"> 1. Pull lifting arm up and down a few times with the release valve open. if necessary, the valve may be removed and the valve seat cleaned.
Jack Lowers Under Load.	Discharge Valve Held Open	<ol style="list-style-type: none"> 1. Follow the procedure for "low oil level" above.
	Release Valve Held Open/dirty	<ol style="list-style-type: none"> 1. Pull lifting arm up and down a few times with the release valve open. if necessary, the valve may be removed and the valve seat cleaned.
Jack Will Not Lift Full 2 Tonne	Air May Be Trapped In The System	<ol style="list-style-type: none"> 1. Open release valve and pump handle fully, 6 or 7 times to purge air. 2. Close release valve and try again.

If any of these remedies fail to restore your jack, consult your CLARKE dealer

DECLARATION OF CONFORMITY



DECLARATION OF CONFORMITY

This is an important document and should be retained.



We declare that this product complies with the following directives:

98/37/EC Machinery Directive.

The Following Standards have been applied to the product:

The technical documentation required to demonstrate that the products meet the requirements of the Machinery directive has been compiled and is available for inspection by the relevant enforcement authorities.

The CE mark was first applied in: 2005

Product Description: 2 Ton Trolley Jack
Model number(s): CTJ2B
Serial / batch Number: Current Manufacture.
Date of issue: 09-07-08

Signed

A.C. AIKEN

Senior Manager Clarke International.



DECLARATION OF CONFORMITY

This is an important document and should be retained.



We declare that this product complies with the following directives:

98/37/EC Machinery Directive.

The Following Standards have been applied to the product:

The technical documentation required to demonstrate that the products meet the requirements of the Machinery directive has been compiled and is available for inspection by the relevant enforcement authorities.

The CE mark was first applied in: 2005

Product Description: 2 Ton DIY Trolley Jack In Plastic Case
Model number(s): CTJ2MB
Serial / batch Number: Current Manufacture.
Date of issue: 09-07-08

Signed

A.C. AIKEN

Senior Manager Clarke International.

A SELECTION FROM THE VAST RANGE OF

Clarke®

QUALITY PRODUCTS

AIR COMPRESSORS

From DIY to industrial, Plus air tools, spray guns and accessories.

GENERATORS

Prime duty or emergency standby for business, home and leisure.

POWER WASHERS

Hot and cold, electric and engine driven - we have what you need

WELDERS

Mig, Arc, Tig and Spot. From DIY to auto/industrial.

METALWORKING

Drills, grinders and saws for DIY and professional use.

WOODWORKING

Saws, sanders, lathes, mortisers and dust extraction.

HYDRAULICS

Cranes, body repair kits, transmission jacks for all types of workshop use.

WATER PUMPS

Submersible, electric and engine driven for DIY, agriculture and industry.

POWER TOOLS

Angle grinders, cordless drill sets, saws and sanders.

STARTERS/CHARGERS

All sizes for car and commercial use.



PARTS & SERVICE: 020 8988 7400

E-mail: Parts@clarkeinternational.com or Service@clarkeinternational.com

SALES: UK 01992 565333 or Export 00 44 (0)1992 565335

Clarke® INTERNATIONAL Hemnall Street, Epping, Essex CM16 4LG
www.clarkeinternational.com