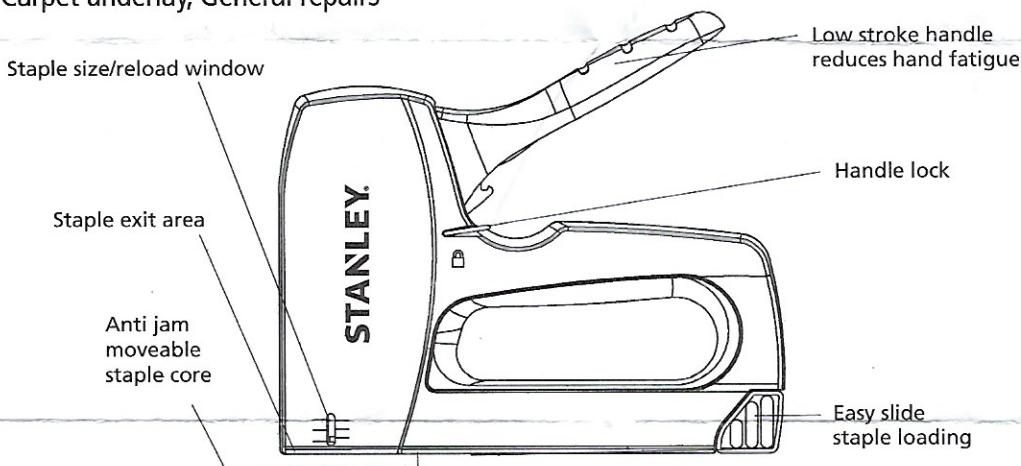


STANLEY® 0-TR151Y

Manual Staple Gun

Applications: Insulation, Upholstery, Roofing paper, Panelling, Carpet underlay, General repairs



Use Stanley® Heavy Duty 1-TRA700T Series, Type G 4/11/140 type staples in the following sizes: 6mm (1/4"), 8mm (5/16"), 10mm (3/8"), 12mm (1/2"), 14mm (9/16")

*Select staple size so about (5mm) 3/16" will penetrate through thickness being stapled.

CAUTION: Read instructions carefully before operating staple gun and save them for future reference.

WARNING:

Tool operator and others in work area should always wear safety glasses to prevent serious eye injury from fasteners and flying debris when loading, operating or unloading this tool.

TO OPERATE:

Place staple exit area where staple is to be driven. Grasp tacker with fingers through opening and depress handle until mechanism releases and drives staple. For best results, hold staple gun so downward pressure keeps exit area firmly against material being stapled.

TO CLEAR OR UNLOAD:

Open channel as when loading; remove jammed staple or unload; close as when loading.

TO LOCK HANDLE DOWN FOR STORAGE:

Be sure staple gun is unloaded. Hold handle down and engage handle lock with notches on inner part of handle.

STAPLE LENGTH GUIDELINES

6mm 1/4" 1-TRA704T	Can be used on window screens, shades, light draperies, shelf paper, signs, tags and other thin materials.
8mm 5/16" 1-TRA705T	Can be used on light upholstery and other relatively thin materials.
10mm 3/8" 1-TRA706T	Can be used on insulation, weather stripping, wire mesh, carpet underlay, canvas and other materials of moderate strength where material thickness is up to about 5mm (3/16") maximum.
12mm 1/2" 1-TRA708T 14mm 9/16" 1-TRA709T	Can be used where thickness of material being stapled is substantial, for example, foam insulation board or heavy folded draperies (about 6.3mm (1/4") to 10mm (3/8") thick).

SAFETY INSTRUCTIONS:

Keep out of reach of children.

Wear safety glasses when operating tacker.

Know what materials you are stapling. Watch out for potential hazards such as electrical wires.

Do not over reach so as to cause loss of balance or loss of secure footing.

NOTE:

DO NOT ATTEMPT TO DISASSEMBLE/ REASSEMBLE THIS TOOL. REPLACEMENT PARTS ARE NOT AVAILABLE. THE TOOL HAS BEEN DESIGNED FOR PROFESSIONAL DURABILITY IN NORMAL APPLICATIONS WITHOUT THE NEED TO REPLACE PARTS.

Noise Emitted

DECLARED SINGLE-NUMBER NOISE EMISSION VALUES (in accordance with ISO 4871)

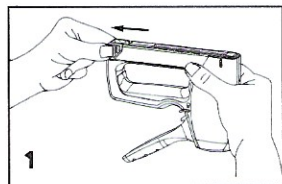
A-Weighted sound power level, LWAd, in decibels 100 dBa

A-Weighted emission sound pressure level, LpAd at operator's position, in decibels 91 dBa

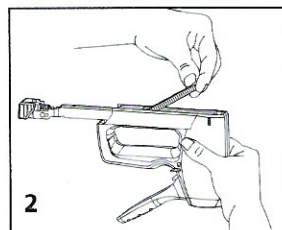
Values determined according to noise test code given in EN 12549:1999, using the basic standards EN ISO 4871.

Maintenance Instructions:

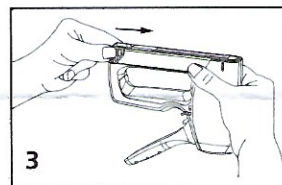
Keep tool clean, dry and rust free
No maintenance is required.



LOADING: Hold staple gun upside down as shown in Fig. 1 and release loading latch. Pull slide open.



Place stick of staples in bottom channel as shown in Fig. 2 so legs are pointing up.



Push slide closed as shown in Fig. 3, making sure that latch engages.



© 2016 Stanley Black & Decker
Egide Walschaertsstraat 14-16
2800 Mechelen, Belgium

STANLEY
STANLEY